

# SSD4956-A

49.5" Resizing LCD, 1200 nits LED backlight, 1920x538 ultra wide aspect ratio 16:4.5

SSD4956-A is an innovative ultra-wide, sunlight readable, LED backlight LCD display. It provides LCD panel with specific ratios for digital signage, public transportation, exhibition hall, department store, vending machine and industrial applications. Incorporating with A.D. control board and backlight design, it is high brightness and sunlight readable panel, can display high-quality video with energy-efficient.



## KEY FEATURES

- Resizing LCD
- Ultra Wide Screen (16 : 4.5)
- Sunlight Readable
- LED Backlight
- High Brightness 1200 nits
- Low Power Consumption
- Wide Dimming
- Life Expectancy (70,000hrs)
- Slim Bezel

## APPLICATIONS

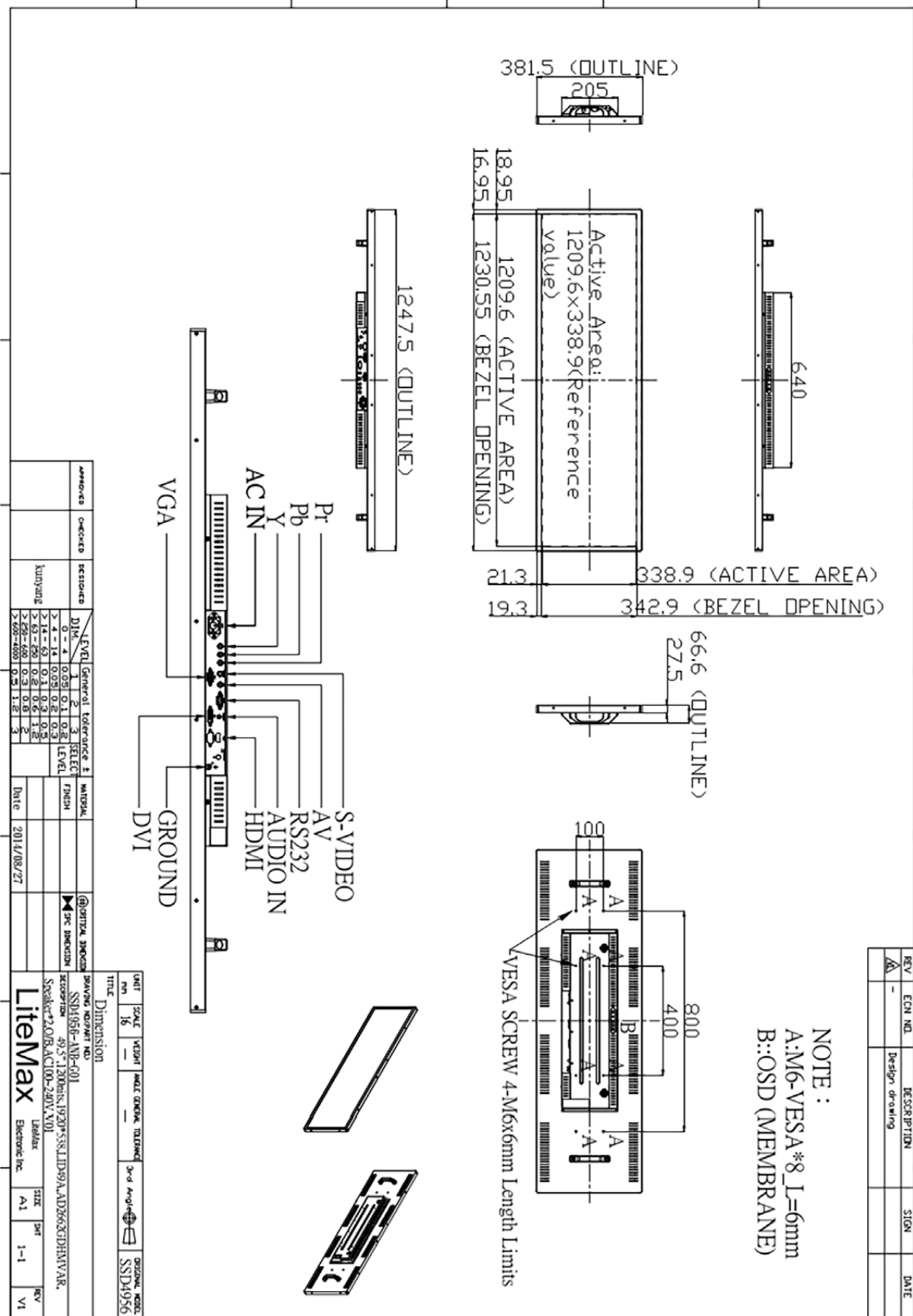
- Digital Signage
- Information

## SPECIFICATIONS

Model No.	SSD4956-A
Description	49.5" Wide TFT LCD, LED Backlight 1200 nits, 1920x538
Display Area (mm)	1209.6 x 338.9mm
Brightness	1200cd/m <sup>2</sup>
Resolution	1920 x 538
Aspect Ratio	16 : 4.5
Contrast Ratio	9700:1
Pixel Pitch (mm)	0.21(H) x 0.63(V) mm
Viewing Angle	R/L 178(Typ.), U/D 178(Typ.)
Display Colors	16.7M
Response Time (Typical)	6.5 ms
Sync	LVDS
Power Consumption	104W
Dimensions (mm)	1247.5 x 381.5 x 66.6
Weight (Net)	18.4kg
LED Driving Board	LID49A
Control Board (Optional)	<input type="checkbox"/> AD2662GDHMVAR
<input type="checkbox"/> AD2662GDHMVAR	VGA,DVI,HDMI (option AV/ S-Video/ Component/ Audio)
F / R Control Button	<input type="checkbox"/> 4 Key
<input type="checkbox"/> 4 Key	Power Switch, Menu, Select (+,-),
OSD Menu	Brightness, Contrast, H/V Position, Color, Phase, Clock...
Optional	<input type="checkbox"/> AOT <input type="checkbox"/> Touch Screen

\*Specifications are subject to change without notice. \*\*All brands or product names are trademarks or registered trademarks of their respective companies.

SSD= Panel+ LED Driving Board + Control Board + Housing



NOTE :  
A:M6-VESA\*8\_L=6mm  
B::OSD (MEMBRANE)

REV	ECN NO.	DESCRIPTION	SIGN	DATE
Δ	-	Design drawing		