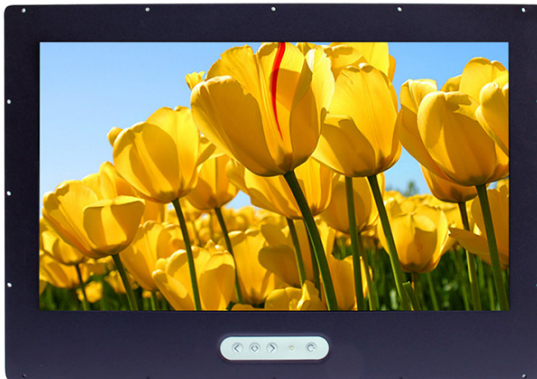


SLD1825 V2

18.5" Wide TFT LCD Monitor, LED Backlight 1000nits, WXGA

18.5" Wide TFT LCD Monitor, built-in 1000 nits high bright for sunlight readable LCD display, high transmittance color filter, high transmission polarizing plates, Low Power Consumption, suitable for kiosk, advertising, POS, transportation, gaming, studio display, gas pump.



KEY FEATURES

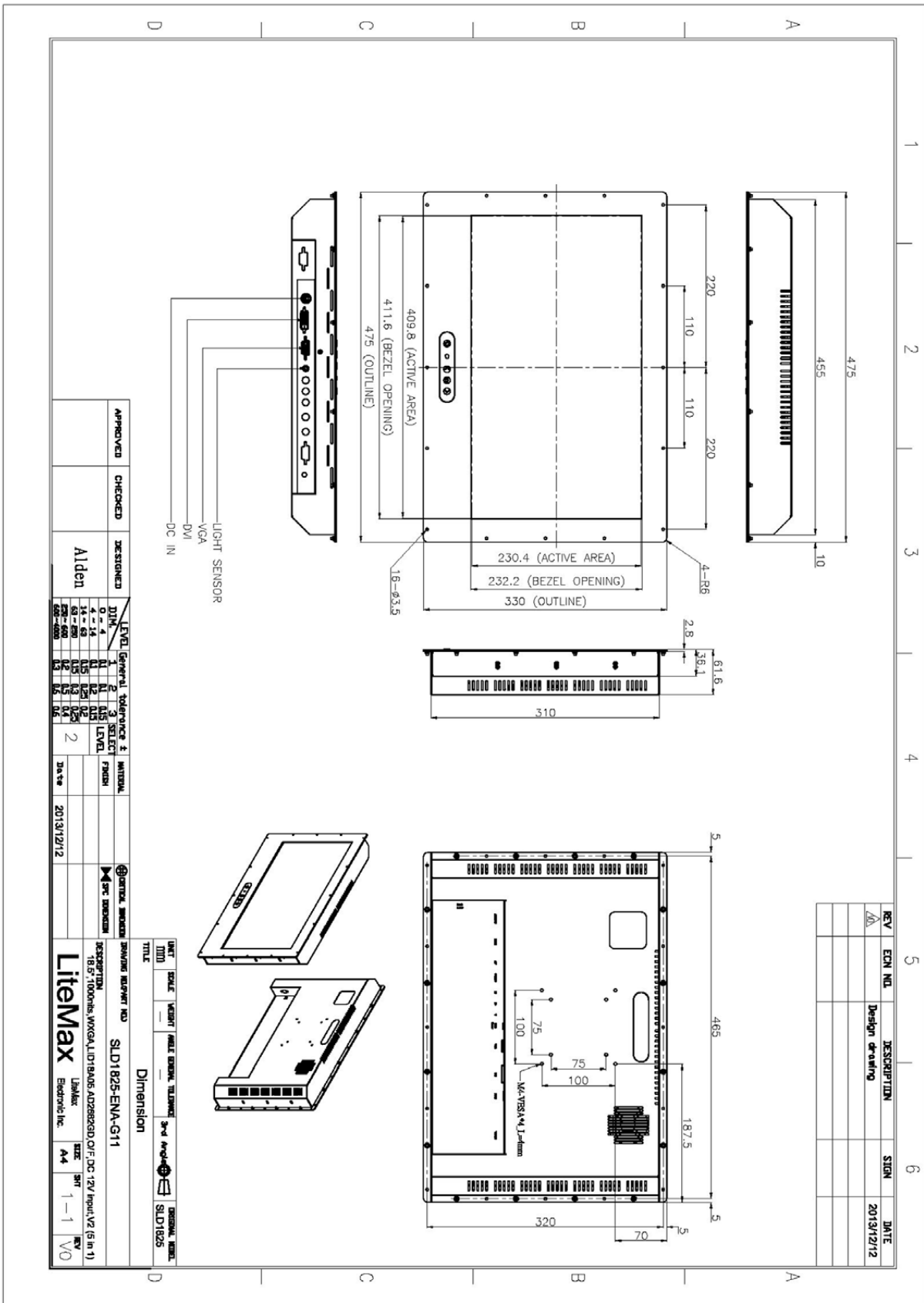
- Sunlight Readable
- LED Backlight
- High Shock & Vibration Resistance
- Low Power Consumption
- High Uniformity
- Low EMI Noise
- Wide Dimming

SPECIFICATIONS

Model No.	SLD1825 V2
Description	18.5" Wide TFT LCD Monitor, LED Backlight 1000nits, WXGA
Display Area (mm)	409.8(h) x 230.4(v) mm
Brightness	1000 cd/m ²
Resolution	1366x768 (WXGA)
Contrast Ratio	1250 : 1
Pixel Pitch (mm)	0.3(H) x 0.3(V)
Viewing Angle	+85°~-85°(H), +80°~-80°(V)
Display Colors	16.7M
Response Time (Typical)	5ms
Sync	LVDS
Power Consumption	21W
Dimensions (mm)	475x330x61.6
Weight (Net)	4.8Kg
LED Driving Board	LID 18A
Control Board (Optional)	<input type="checkbox"/> AD2662GD <input type="checkbox"/> AD2662GDVAR
<input type="checkbox"/> AD2662GD	VGA+DVI
<input type="checkbox"/> AD2662GDVAR	VGA+DVI +CVBS+S□Video+Audio+RS232
F / R Control Button	<input type="checkbox"/> 4 Key <input type="checkbox"/> 5 Key
<input type="checkbox"/> 4 Key	Power Switch, Menu, Select (+,-),
<input type="checkbox"/> 5 Key	Power Switch, Menu, Select (+,-), Auto
OSD Menu	Brightness, Contrast, H/V Position, Color, Phase, Clock...
Optional	<input type="checkbox"/> AOT <input type="checkbox"/> Touch Screen

*Specifications are subject to change without notice. **All brands or product names are trademarks or registered trademarks of their respective companies.

SLD/SLO = Panel+ LED Driving Board + Control Board + Housing



APPROVED	CHECKED	DESIGNED	DATE
		Alden	2013/12/12

LEVEL	GENERAL TOLERANCE ±	MINIMUM
0 - 4	0.15	0.15
5 - 14	0.20	0.20
15 - 24	0.25	0.25
25 - 34	0.30	0.30
35 - 44	0.35	0.35
45 - 54	0.40	0.40
55 - 64	0.45	0.45
65 - 74	0.50	0.50
75 - 84	0.55	0.55
85 - 94	0.60	0.60
95 - 104	0.65	0.65
105 - 114	0.70	0.70
115 - 124	0.75	0.75
125 - 134	0.80	0.80
135 - 144	0.85	0.85
145 - 154	0.90	0.90
155 - 164	0.95	0.95
165 - 174	1.00	1.00
175 - 184	1.05	1.05
185 - 194	1.10	1.10
195 - 204	1.15	1.15
205 - 214	1.20	1.20
215 - 224	1.25	1.25
225 - 234	1.30	1.30
235 - 244	1.35	1.35
245 - 254	1.40	1.40
255 - 264	1.45	1.45
265 - 274	1.50	1.50
275 - 284	1.55	1.55
285 - 294	1.60	1.60
295 - 304	1.65	1.65
305 - 314	1.70	1.70
315 - 324	1.75	1.75
325 - 334	1.80	1.80
335 - 344	1.85	1.85
345 - 354	1.90	1.90
355 - 364	1.95	1.95
365 - 374	2.00	2.00
375 - 384	2.05	2.05
385 - 394	2.10	2.10
395 - 404	2.15	2.15
405 - 414	2.20	2.20
415 - 424	2.25	2.25
425 - 434	2.30	2.30
435 - 444	2.35	2.35
445 - 454	2.40	2.40
455 - 464	2.45	2.45
465 - 474	2.50	2.50
475 - 484	2.55	2.55
485 - 494	2.60	2.60
495 - 504	2.65	2.65
505 - 514	2.70	2.70
515 - 524	2.75	2.75
525 - 534	2.80	2.80
535 - 544	2.85	2.85
545 - 554	2.90	2.90
555 - 564	2.95	2.95
565 - 574	3.00	3.00
575 - 584	3.05	3.05
585 - 594	3.10	3.10
595 - 604	3.15	3.15
605 - 614	3.20	3.20
615 - 624	3.25	3.25
625 - 634	3.30	3.30
635 - 644	3.35	3.35
645 - 654	3.40	3.40
655 - 664	3.45	3.45
665 - 674	3.50	3.50
675 - 684	3.55	3.55
685 - 694	3.60	3.60
695 - 704	3.65	3.65
705 - 714	3.70	3.70
715 - 724	3.75	3.75
725 - 734	3.80	3.80
735 - 744	3.85	3.85
745 - 754	3.90	3.90
755 - 764	3.95	3.95
765 - 774	4.00	4.00
775 - 784	4.05	4.05
785 - 794	4.10	4.10
795 - 804	4.15	4.15
805 - 814	4.20	4.20
815 - 824	4.25	4.25
825 - 834	4.30	4.30
835 - 844	4.35	4.35
845 - 854	4.40	4.40
855 - 864	4.45	4.45
865 - 874	4.50	4.50
875 - 884	4.55	4.55
885 - 894	4.60	4.60
895 - 904	4.65	4.65
905 - 914	4.70	4.70
915 - 924	4.75	4.75
925 - 934	4.80	4.80
935 - 944	4.85	4.85
945 - 954	4.90	4.90
955 - 964	4.95	4.95
965 - 974	5.00	5.00
975 - 984	5.05	5.05
985 - 994	5.10	5.10
995 - 1004	5.15	5.15

REV	ECN NO.	DESCRIPTION	SIGN	DATE
1		Design drawing		2013/12/12

Dimension

SLD1825-ENA-G11

18.5" 1000mm WXGA LCD 1940S ADDRESSABLE DC 12V Input (5 in 1)

LiteMax

Labeler: A4

Rev: 1-1

VO