

# SLD1085

10.4" TFT LCD, LED Backlight 1000nits,XGA

10.4" TFT LCD panel, built-in 1000 nits high bright for sunlight readable LCD display, high transmittance color filter, high transmission polarizing plates, Low Power Consumption, suitable for kiosk, advertising, POS, marline, transportation, gaming, studio display, gas pump.



## KEY FEATURES

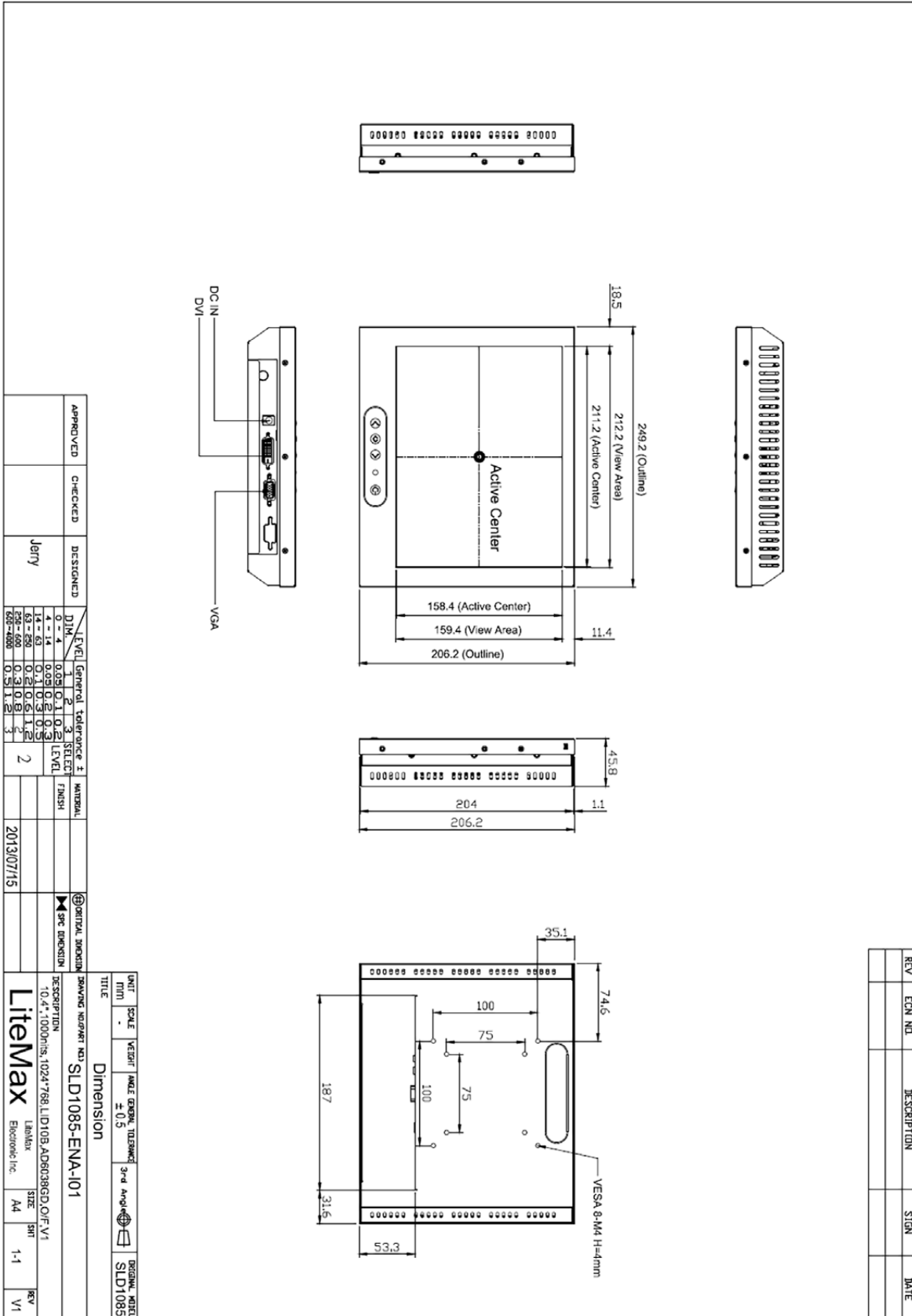
- Sunlight Readable
- LED Backlight
- High Shock & Vibration Resistance
- Low Power Consumption
- Wide Operation Temperature
- High Uniformity
- Low EMI Noise
- Wide Dimming
- Life Expectancy

## SPECIFICATIONS

Model No.	SLD1085
Description	10.4" TFT LCD, LED Backlight 1000 nits, XGA
Display Area (mm)	211.2 (H) x 158.4(V) mm
Brightness	1000 cd/m <sup>2</sup>
Resolution	1024 x 768 (XGA)
Contrast Ratio	600 : 1
Pixel Pitch (mm)	0.20625(H) x 0.20625(V)
Viewing Angle	140°(H), 120°(V)
Display Colors	262K
Response Time (Typical)	25ms (Typical)
Sync	LVDS
Power Consumption	15W
Dimensions (mm)	249.2(W) x 206.2(H) x 45.8(D)mm
Weight (Net)	1.64Kg
LED Driving Board	LID10B
Control Board (Optional)	<input type="checkbox"/> AD6038GD
<input type="checkbox"/> AD6038GD	VGA+DVI
F / R Control Button	<input type="checkbox"/> 4 Key
<input type="checkbox"/> 4 Key	Power Switch, Menu, Select (+,-),
OSD Menu	Brightness, Contrast, H/V Position, Color, Phase, Clock...
Optional	<input type="checkbox"/> AOT <input type="checkbox"/> Touch Screen

\*Specifications are subject to change without notice. \*\*All brands or product names are trademarks or registered trademarks of their respective companies.

SLD/SLO = Panel+ LED Driving Board + Control Board + Housing



REV	ECN NO.	DESCRIPTION	SIGN	DATE

APPROVED	CHECKED	DESIGNED	LEVEL	General tolerance ±	MATERIAL
		Jerry	1	0.4	
			2	0.05	
			3	0.1	
			LEVEL	FINISH	
			2		

UNIT	SCALE	VECT	ANG	GEN	TOL	DR	DR	DR
MM	-				± 0.5	3rd	Ang	DR

TITLE	DESCRIPTION	DATE	SIZE	SHR	REV
Dimension	SLD1085-ENA-101	2013/07/15	A4	1-1	V1

DESCRIPTION	DATE	SIZE	SHR	REV
10.4" 1000nits 1024x768 LID105-ADB038GSD/O/F V1		A4	1-1	V1

**LiteMax** LiteMax Electronic Inc.