

SLD0625

6.5" TFT LCD, LED Backlight 1000nits,VGA(640x480)

SLD0625 is LCD display, built-in 1000 nits high brightness for sunlight readable application. Features wide operating temperature, high brightness, AOT optical bonding, touch screen capable, and customized mechanical design; fulfill the demand for extreme environments. The high level of brightness together with LED backlight technology, the monitor brings remarkable display quality. And guaranteeing product life cycle longevity, stability, and reliability. Perfectly suitable for kiosk, ATM, POS, military, transportation, and outdoor industrial application.



KEY FEATURES

- Sunlight Readable
- LED Backlight
- High Shock & Vibration Resistance
- Low Power Consumption
- Wide Temperature. Range
- High Uniformity
- Low EMI Noise
- Wide Dimming
- Life Expectancy
- Operation Temperature: -30°C ~ 80 °C

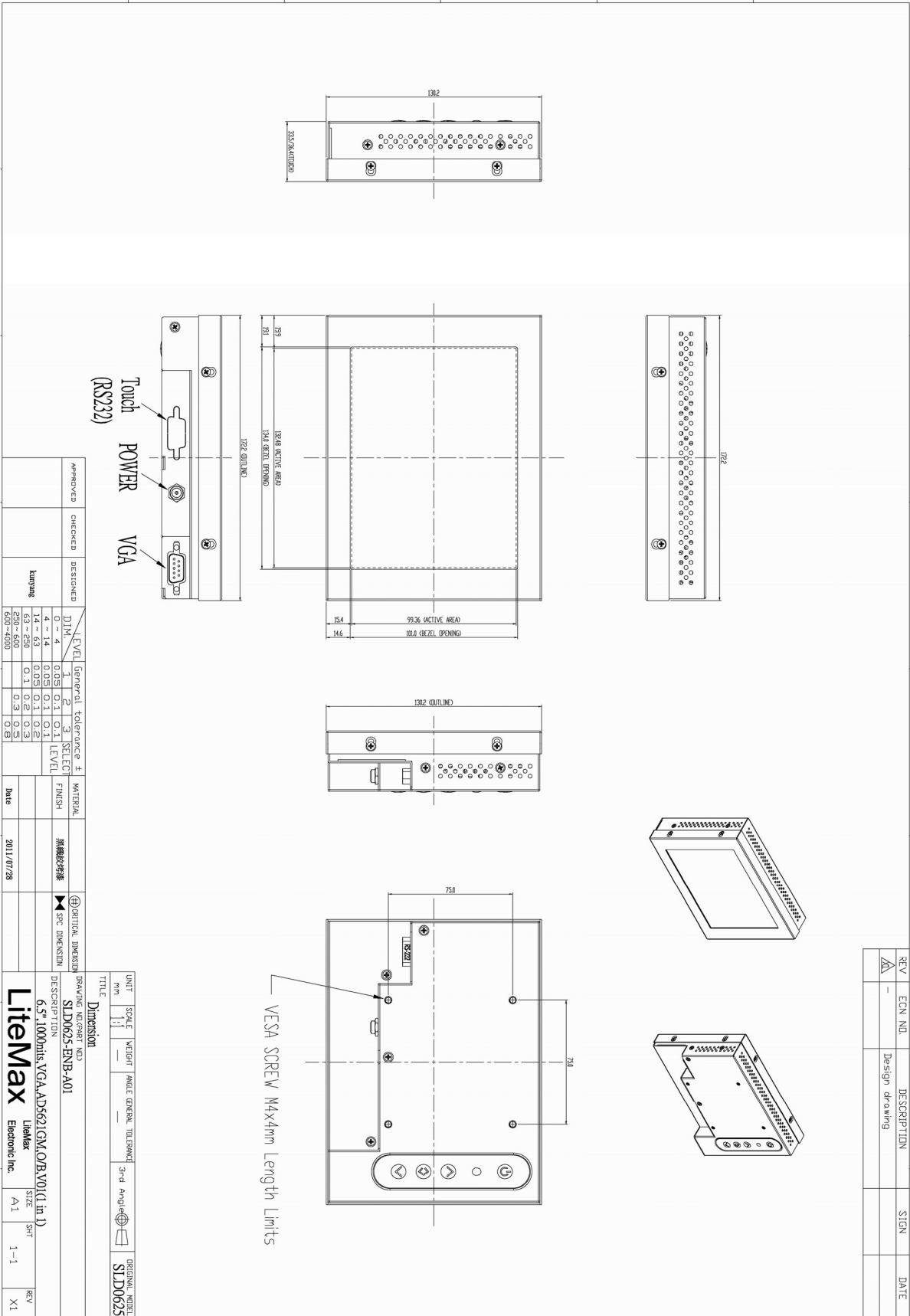
SPECIFICATIONS

Model No.	SLD0625
Description	6.5" Open Frame ,TFT LCD, LED Backlight 1000nits,VGA(640x480)
Display Area (mm)	132.48 x 99.36 mm
Brightness	1,000 cd/m ²
Resolution	640 x480 (VGA)
Contrast Ratio	600 : 1
Pixel Pitch (mm)	0.207(H) x 0.207(V)
Viewing Angle	160°(H), 140°(V)
Display Colors	16.2M colors
Response Time (Typical)	25ms (Typical)
Power Consumption (SSF)	5W
Dimensions (mm)	172.2x101x33.5mm
Weight (Net)	0.38Kg
Control Board (Optional)	<input type="checkbox"/> AD5621GM <input type="checkbox"/> AD5621GD <input type="checkbox"/> AD5766GDVA <input type="checkbox"/> AD2662GDVAR
<input type="checkbox"/> AD5621GM	VGA
<input type="checkbox"/> AD5621GD	VGA+DVI
<input type="checkbox"/> AD5766GDVA	VGA+CVBS+S□Video+Audio (Optional DVI)
<input type="checkbox"/> AD2662GDVAR	VGA+DVI (Optional CVBS / S□Video/ Component / Audio)
F / R Control Button	<input type="checkbox"/> 4 Key <input type="checkbox"/> 5 Key
<input type="checkbox"/> 4 Key	Power Switch, Menu, Select (+,-),
<input type="checkbox"/> 5 Key	Power Switch, Menu, Select (+,-), Auto
OSD Menu	Brightness, Contrast, H/V Position, Color, Phase, Clock...
Optional	<input type="checkbox"/> AOT <input type="checkbox"/> Touch Screen <input type="checkbox"/> Waterproof

*Specifications are subject to change without notice. **All brands or product names are trademarks or registered trademarks of their respective companies.

SLD/SLO = Panel+ LED Driving Board + Control Board + Housing

MECHANICAL DRAWING Unit: mm



APPROVED	CHECKED	DESIGNED	DATE
		Junyuan	2011/07/28

LEVEL	General tolerance ±	SELECT LEVEL	WATERMARK
0	0.1	0.1	無標記増速
1	0.05	0.1	▶ SPEC DIMENSION
2	0.1	0.2	
3	0.2	0.3	
4	0.3	0.5	

UNIT	SCALE	WEIGHT	ANGLE	GENERAL TOLERANCE	3rd ANGLE	ORIGINAL SIZE
mm	1:1					SLD0625

TITLE	BRANDING MARKS	DESCRIPTION	SCALE	WEIGHT	ANGLE	GENERAL TOLERANCE	3rd ANGLE	ORIGINAL SIZE
Dimension	SLD0625-BVB-A01	6.5" 1000dots VGA AD5621(GM) (1 in 1)	1:1					SLD0625

REV	SIZE	SHEET	REV
X1	A1	1-1	X1

REV	ECN NO.	DESCRIPTION	SIGN	DATE
1	-	Design drawing		