

DLO1968-U

19" TFT LCD, LED Backlight 1600nits,SXGA(1280x1024),Wide Temp.

19" TFT LCD panel, built-in 1600 nits brightness for sunlight readable LCD display, high transmittance color filter, high transmission polarizing plates, Low Power Consumption, suitable for kiosk, advertising, POS, marline, transportation, gaming, studio display, gas pump.



KEY FEATURES

- Brightness: 1600nits
- LED Backlight
- SXGA(1280x1024) High Definition
- High Shock & Vibration Resistance
- Low Power Consumption
- High Uniformity
- Low EMI Noise
- Wide Dimming
- Wide Temp.: -30~85
- Life Expectancy

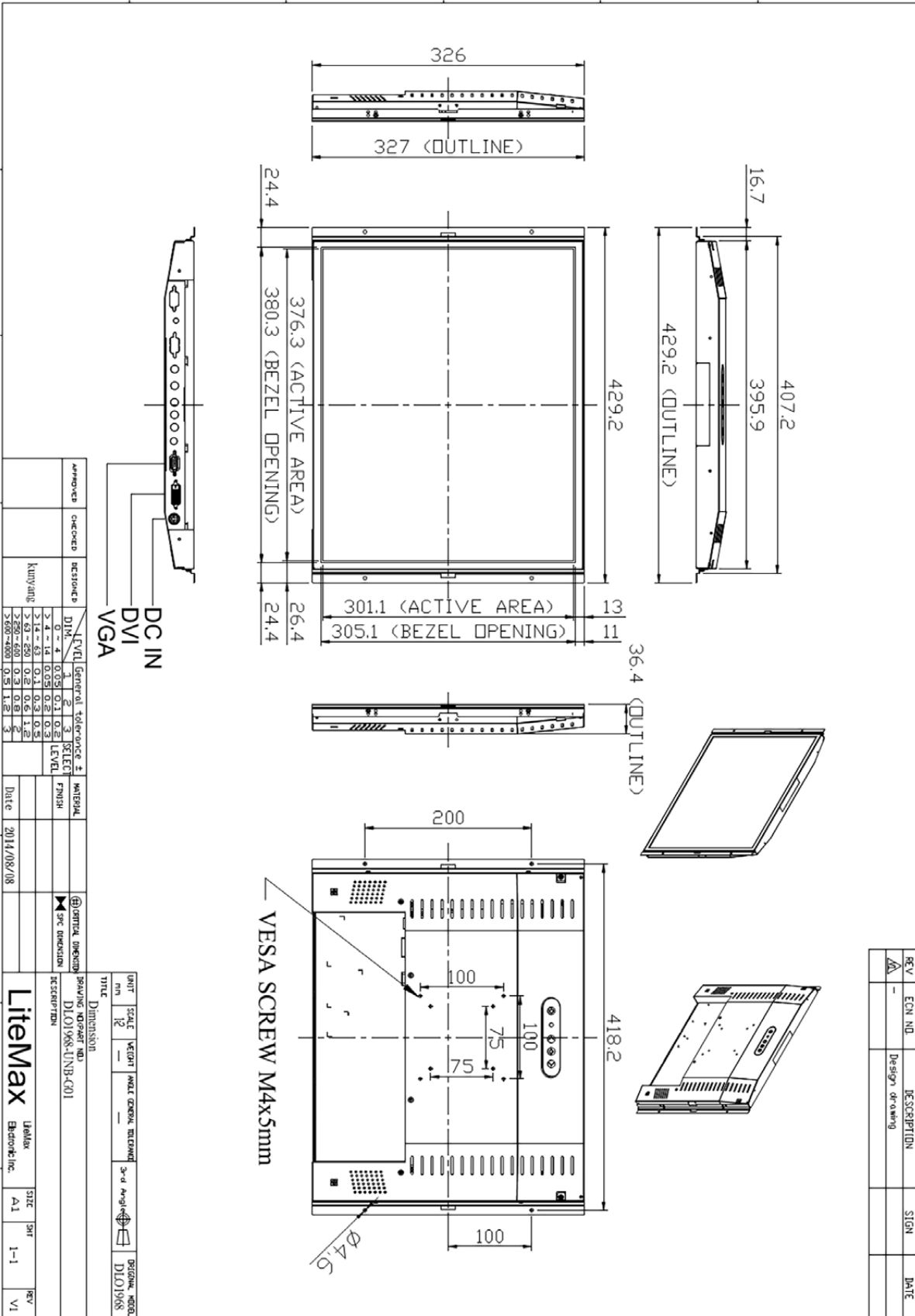
SPECIFICATIONS

Model No.	DLO1968-U
Description	19" TFT LCD, LED Backlight,1600nits,SXGA(1280x1024),Wide Temp.
Display Area (mm)	376.32(H) x 301.06(V)mm
Brightness	1600 cd/m ²
Resolution	1280x1024 (SXGA)
Contrast Ratio	1000 : 1
Pixel Pitch (mm)	0.294(H) x 0.294(V)
Viewing Angle	+85°~-85°(H), +80°~-80°(V)
Display Colors	16.7M
Response Time (Typical)	10ms
Power Consumption	43W
Dimensions (mm)	429.2x326x36.4mm
Weight (Net)	3.2kg
LED Driving Board	LID19A
Control Board (Optional)	<input type="checkbox"/> AD2662GD <input type="checkbox"/> AD2662GDVAR
<input type="checkbox"/> AD2662GD	VGA+DVI
<input type="checkbox"/> AD2662GDVAR	VGA+DVI (Optional AV/ S-Video/ Component / Audio)
F / R Control Button	<input type="checkbox"/> 4 Key <input type="checkbox"/> 5 Key
<input type="checkbox"/> 4 Key	Power Switch, Menu, Select (+,-),
<input type="checkbox"/> 5 Key	Power Switch, Menu, Select (+,-), Auto
OSD Menu	Brightness, Contrast, H/V Position, Color, Phase, Clock...
Optional	<input type="checkbox"/> AOT <input type="checkbox"/> Touch Screen

*Specifications are subject to change without notice. **All brands or product names are trademarks or registered trademarks of their respective companies.

DLD/DLO = Panel+ LED Driving Board + Control Board + Housing

MECHANICAL DRAWING Unit: mm



REV	ECN NO.	DESCRIPTION	SIGN	DATE
1	-	Design drawing		

LEVEL	General tolerance	SELECT LEVEL	MATERIAL	FINISH
0 - 4	0.05	0.1	0.2	0.3
> 4 - 14	0.05	0.2	0.3	0.4
> 14 - 20	0.2	0.3	0.4	0.5
> 20 - 40	0.3	0.4	0.5	0.6
> 40 - 100	0.5	0.6	0.7	0.8
> 100 - 200	0.6	0.8	1.0	1.2
> 200 - 400	0.8	1.2	1.5	2.0
> 400 - 1000	1.2	2.0	2.5	3.0

APPROVED	CHECKED	DESIGNED	DATE
			2014/08/08

UNIT	SCALE	WEIGHT	MODEL GENERAL	INTERCOM	3rd Party	DRIGRAM	MODEL
mm	1:2						DLO1968

TITLE		DIMENSION	
DRAWING NO/REV NO		DLO1968-UNB-C01	
DESCRIPTION		LitenMax	
Label	SIZE	SHT	REV
Electronic Inc.	A1	1-1	V1